



Microsoft Deployment Toolkit

Solution de déploiement de masters et d'applications à
FEMTO-ST

PUJOL Sébastien

MDT 2012



Problématique : Trouver des solutions

- Permettant le déploiement de systèmes et d'applications personnalisés
- Adaptée aux machines n'appartenant pas à un domaine
- Permettant le moins d'interventions humaines possible
- Facilitant la réinstallation des postes et permettant de conserver les documents des utilisateurs

FEMTO-ST regroupe plusieurs départements et équipes,
certains logiciels sont spécifiques aux départements

MDT 2012



Microsoft Deployment Toolkit (MDT) 2012 is the newest version of Microsoft Deployment Toolkit, a Solution Accelerator for operating system and application deployment. MDT 2012 supports deployment of Windows 7, Office 2010 and 365, and Windows Server 2008 R2 in addition to deployment of Windows Vista, Windows Server 2008, Windows Server 2003, and Windows XP.

Quick details

Version: 6.0
Language: English
Date published: 5/17/2012

Files in this download

The links in this section correspond to files available for this download. Download the files appropriate for you.

File name	Size	
MicrosoftDeploymentToolkit2012_x64.msi	22.4 MB	DOWNLOAD
MicrosoftDeploymentToolkit2012_x86.msi	22.0 MB	DOWNLOAD
Optional - MDT 2012 Print-Ready Documentation.zip	9.7 MB	DOWNLOAD
Release Notes.docx	1.2 MB	DOWNLOAD
Whats New in MDT Guide.docx	103 KB	DOWNLOAD

Overview

Deploy Windows 7, Office 2010 and 365, and Windows Server 2008 R2 with the newly released Microsoft Deployment Toolkit 2012. MDT is the recommended process and toolset for automating desktop and server deployment. MDT provides you with the following benefits:

- Unified tools and processes, including a set of guidance, for deploying desktops and servers in a common deployment console.

Site Microsoft

Pré-requis

- Windows 7 Professionnel
- Windows Automated Installation Kit (AIK)
<http://www.microsoft.com/fr-fr/download/details.aspx?id=5753>
- MDT 2012
<http://www.microsoft.com/en-us/download/details.aspx?id=25175>
- Windows Deployment Services (WDS)
Utilisé pour des postes appartenant à un domaine

MDT 2012



Deux modes de déploiement différents

- Zero Touch Intervention (ZTI)

Méthode de déploiement permettant de n'avoir aucune intervention de la part du technicien (nécessite que les machines soient dans un domaine)

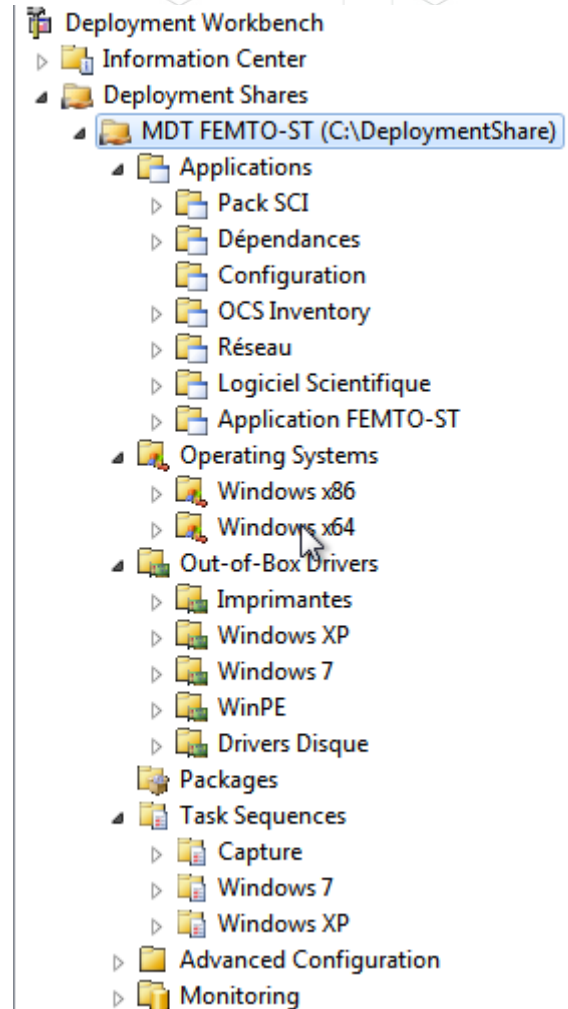
- Lite Touch Intervention (LTI)

Méthode de déploiement demandant les détails de l'installation au début de l'installation / réinstallation de poste

MDT 2012

Fonctionnement de MDT

- Applications
- Operating Systems
- Out-of-Box Drivers
- Packages
- Task Sequences
- Advanced Configuration
- Monitoring

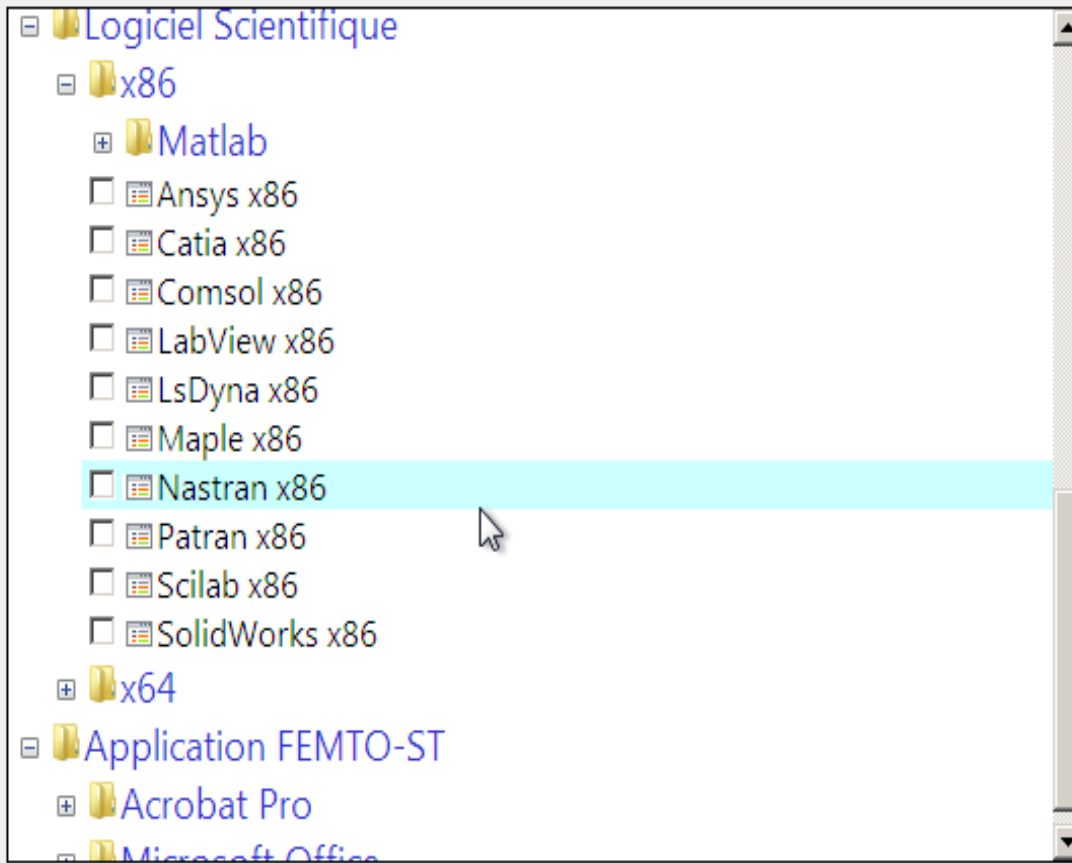


MDT 2012

MDT 2012



Select one or more applications to install.



MDT lors du déploiement

Applications

- Windows Package Installer (WPI)
- Installation Silencieuse
- Applications de configuration

MDT 2012



Select a task sequence to execute on this computer.

- ▣ Capture
 - Capture Windows 7 X86
 - Capture Windows 7 X64
- ▣ Windows 7
 - Windows 7 x64
 - Windows 7 x86
- ▣ Windows XP
 - Windows XP

Operating Systems

- Windows XP
- Windows Vista
- Windows 7
- Windows 8

- Capture

- Installation en 32/64 bits

MDT lors du déploiement

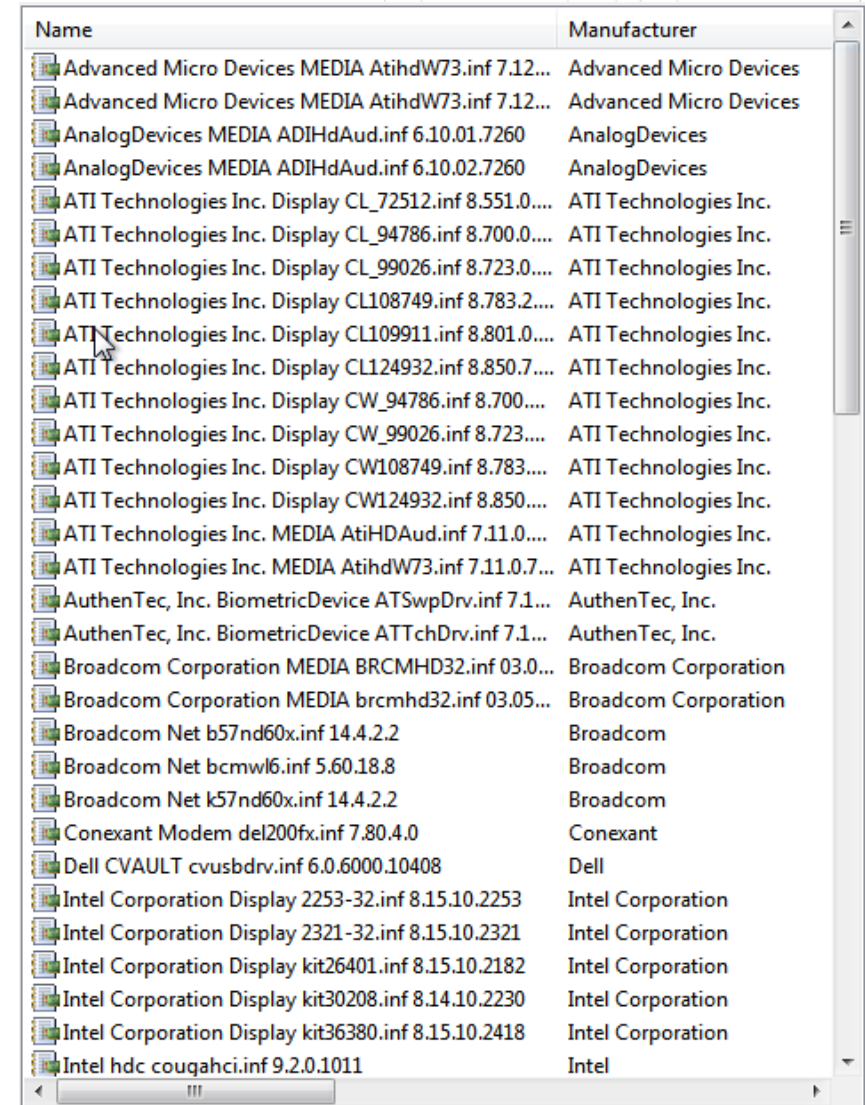
MDT 2012

Out-Of-Box Drivers

Drivers pour WinPE et Windows

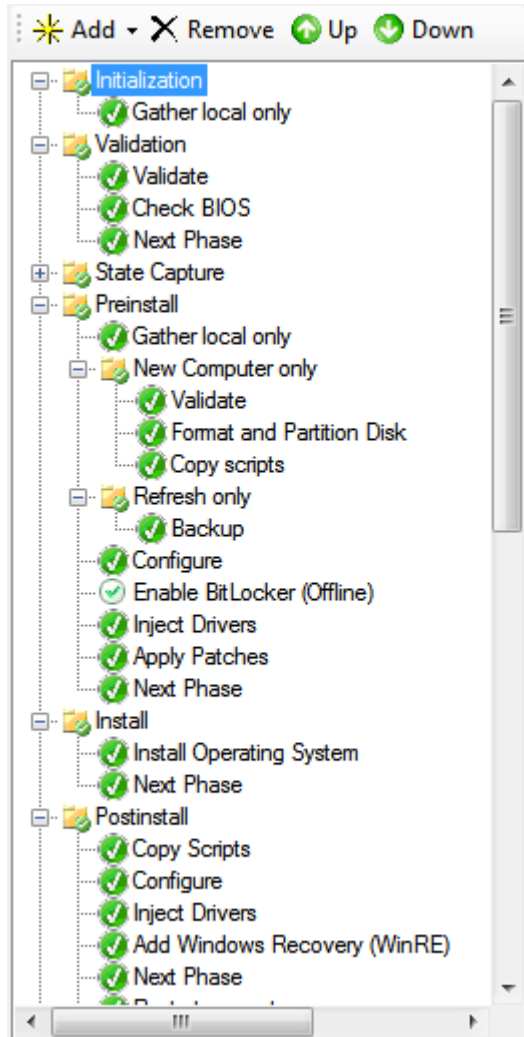
Packages

- Mise à jour Windows
- Pack de langues



Name	Manufacturer
Advanced Micro Devices MEDIA AtihdW73.inf 7.12...	Advanced Micro Devices
Advanced Micro Devices MEDIA AtihdW73.inf 7.12...	Advanced Micro Devices
AnalogDevices MEDIA ADIHdAud.inf 6.10.01.7260	AnalogDevices
AnalogDevices MEDIA ADIHdAud.inf 6.10.02.7260	AnalogDevices
ATI Technologies Inc. Display CL_72512.inf 8.551.0....	ATI Technologies Inc.
ATI Technologies Inc. Display CL_94786.inf 8.700.0....	ATI Technologies Inc.
ATI Technologies Inc. Display CL_99026.inf 8.723.0....	ATI Technologies Inc.
ATI Technologies Inc. Display CL108749.inf 8.783.2....	ATI Technologies Inc.
ATI Technologies Inc. Display CL109911.inf 8.801.0....	ATI Technologies Inc.
ATI Technologies Inc. Display CL124932.inf 8.850.7....	ATI Technologies Inc.
ATI Technologies Inc. Display CW_94786.inf 8.700....	ATI Technologies Inc.
ATI Technologies Inc. Display CW_99026.inf 8.723....	ATI Technologies Inc.
ATI Technologies Inc. Display CW108749.inf 8.783....	ATI Technologies Inc.
ATI Technologies Inc. Display CW124932.inf 8.850....	ATI Technologies Inc.
ATI Technologies Inc. MEDIA AtiHDAud.inf 7.11.0....	ATI Technologies Inc.
ATI Technologies Inc. MEDIA AtihdW73.inf 7.11.0.7...	ATI Technologies Inc.
AuthenTec, Inc. BiometricDevice ATSwpDrv.inf 7.1...	AuthenTec, Inc.
AuthenTec, Inc. BiometricDevice ATTchDrv.inf 7.1...	AuthenTec, Inc.
Broadcom Corporation MEDIA BCMHD32.inf 03.0...	Broadcom Corporation
Broadcom Corporation MEDIA brcmhd32.inf 03.05...	Broadcom Corporation
Broadcom Net b57nd60x.inf 14.4.2.2	Broadcom
Broadcom Net bcmwl6.inf 5.60.18.8	Broadcom
Broadcom Net k57nd60x.inf 14.4.2.2	Broadcom
Conexant Modem del200fx.inf 7.80.4.0	Conexant
Dell CVAULT cvusbdrv.inf 6.0.6000.10408	Dell
Intel Corporation Display 2253-32.inf 8.15.10.2253	Intel Corporation
Intel Corporation Display 2321-32.inf 8.15.10.2321	Intel Corporation
Intel Corporation Display kit26401.inf 8.15.10.2182	Intel Corporation
Intel Corporation Display kit30208.inf 8.14.10.2230	Intel Corporation
Intel Corporation Display kit36380.inf 8.15.10.2418	Intel Corporation
Intel hdc couqahci.inf 9.2.0.1011	Intel

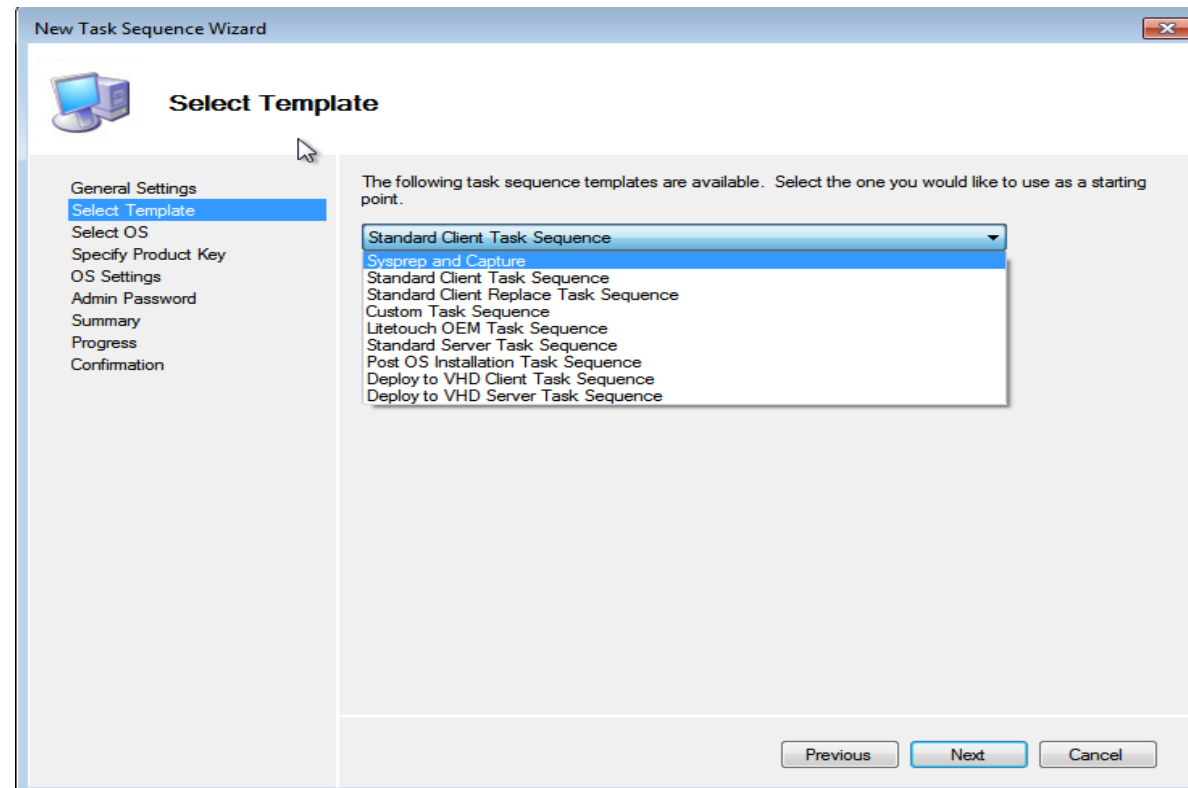
MDT 2012



Exemple Task Sequence

Task Sequence

- Task Sequence prédéfinie
- Création de Task Sequence personnalisées



MDT Création d'une Task Sequence

MDT 2012



Advanced Configuration

- Création de masters
- Création de profils pour les drivers et packages
- Mise en place de la base de donnée

Monitoring

- Suivi de l'installation du parc
- Prise de contrôle à distance

ID:	<input type="text" value="20"/>
Computer Name:	<input type="text" value="AS2M-RABENOROSA"/>
Deployment status:	<input type="text" value="Failed"/>
Step:	<input type="text"/>
Progress:	<input type="range" value="65"/> Step 65 of 86
Start:	<input type="text" value="05/06/2012 11:00:00"/>
End:	<input type="text" value="05/06/2012 11:51:24"/>
Elapsed:	<input type="text" value="00:51:23"/>
Errors:	<input type="text" value="4"/>
Warnings:	<input type="text" value="0"/>

Écran de monitoring

MDT 2012



Les grands +

- Les scripts dans la Task Sequence sont en VBScript
- Création d'images WIM
- Mise en place simple

Les petits -

- Défaut au niveau du partitionnement
- Le système de réinstallation de poste

The background of the slide is a dark blue gradient with a white grid of lines that curves from the top left towards the center. The text is centered on this background.

Microsoft | Solution Accelerators

Des Questions ?